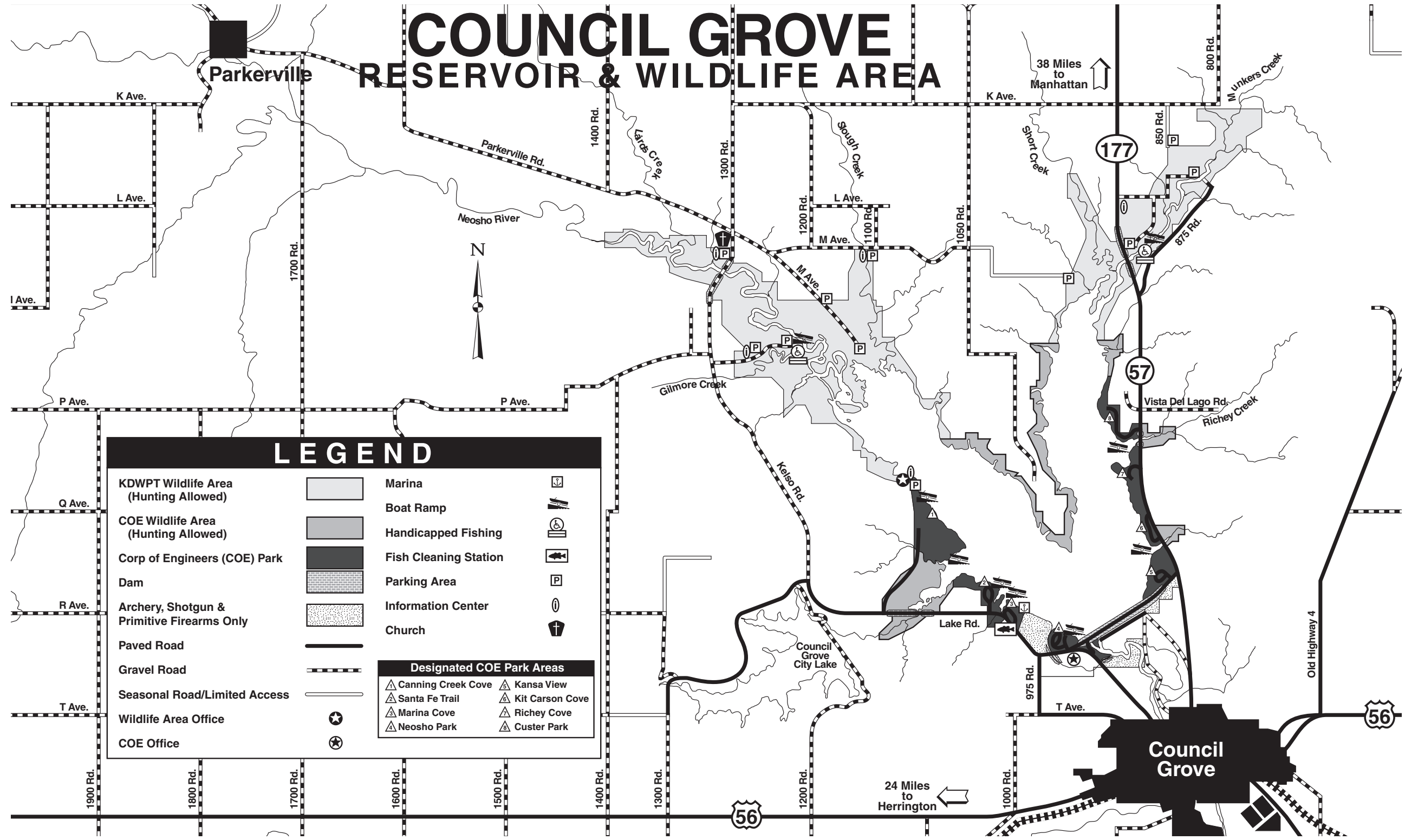


COUNCIL GROVE RESERVOIR & WILDLIFE AREA



LEGEND

KDWPT Wildlife Area (Hunting Allowed)		Marina	
COE Wildlife Area (Hunting Allowed)		Boat Ramp	
Corp of Engineers (COE) Park		Handicapped Fishing	
Dam		Fish Cleaning Station	
Archery, Shotgun & Primitive Firearms Only		Parking Area	
Paved Road		Information Center	
Gravel Road		Church	
Seasonal Road/Limited Access		Designated COE Park Areas	
Wildlife Area Office			Canning Creek Cove
COE Office			Kansa View
			Santa Fe Trail
			Kit Carson Cove
			Marina Cove
			Richey Cove
			Neosho Park
			Custer Park

COUNCIL GROVE

Council Grove Reservoir is located on the Neosho River 1.5 miles northwest of Council Grove. The reservoir was constructed by the U.S. Army Corps of Engineers (COE) in 1964.

The dam impounds 3,235 surface acres at conservation pool. The wildlife area consists of 2,638 acres of land and water at the upper end of the reservoir and is managed by the Kansas

Department of Wildlife, Parks and Tourism (KDWPT).

For more information about COE public use areas please call (620) 767-5195.

FACILITIES

Boat launching facilities are available at most of the Corps of Engineers parks and public use areas. KDWPT has boat launching sites and handicap accessible fishing in the Munkers Creek and Neosho River areas near the upper ends of the reservoir. A privately owned mari-

na is located in the Marina Cove area.

The Corps of Engineers Park areas have electrical and water hookups, dump stations, hiking trails, bathhouses, and drinking water. A public fish cleaning station is also located in the Marina Cove area.

FISHING

The lake has steep rocky shorelines and shallow mudflats. Two good fishing streams, Munkers Creek on the east and the Neosho River on the west, feed the lake. The lake has fair to excellent populations of crappie, channel catfish, flathead catfish, white bass, wiper and saugeye. A few largemouth and spotted bass are also taken.

Crappie fishing picks up in early April in the channel of Munkers Creek and the Neosho River above the lake and along the face of the dam. The best crappie fishing usually occurs during spawning periods. Small gravel-bottomed coves and the church camp peninsula are often the best locations.

White bass spawn upstream during mid to late April

in both Munkers Creek and the Neosho River above the reservoir. Casting jigs or spinners while wading near gravel bars is the best method to catch them.

Pole and line fishing along the mudflats and on the west side of the church camp point is good for catfish. Fishing for channel cats is best in the streams above the reservoir when they are rising after rain.

Spawning occurs between March and April for saugeye. The best area is along the face of the dam within 25 feet of the shore. Most fish are taken on jigs or fin-type lures, either from the dam or a boat.

Special length and creel limits may be in effect. Check the Kansas Fishing Regulations Summary and all posted notices prior to fishing.

each year depending upon lake habitat and ice conditions.

Council Grove Wildlife Area is also open to the hunting and trapping of furbearers. Prominent populations include beaver, raccoon, coyote, and bobcat.

Many non-game wildlife species also inhabit the area and can provide good viewing opportunities.

Some firearm restrictions apply, so hunters are encouraged to consult area maps before planning a trip. Hunting is subject to applicable state and federal wildlife regulations, and is only permitted in areas marked "public hunting." Hunting is not allowed within area parks.

HUNTING

Council Grove Wildlife area is comprised of approximately 2,000 acres of public hunting land surrounding Council Grove Reservoir. The area also features nearly 500 acres of Corps of Engineers (COE) public use areas open to hunting, as well.

In addition to primarily woodland habitat, the wildlife area also features small scattered tracts of native grass, agricultural crops, and annual grasses and forbs. These habitats support good populations of turkey, deer, and squirrel, as well as fair populations of quail, dove, and rabbit. The reservoir can also host good numbers of waterfowl

THINGS TO REMEMBER

Consult area information signs for additional rules and regulations on the area.

Special length and creel limits are in effect for some fish species, check the Kansas Fishing Regulations Summary and all posted notices before fishing.

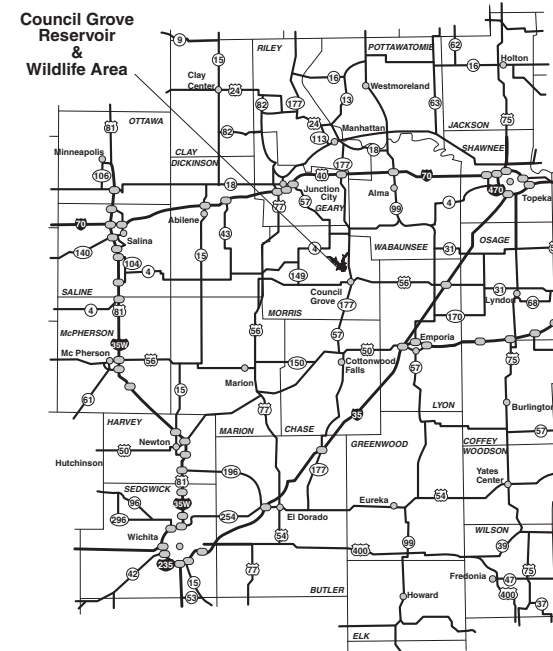
Aquatic nuisance species have been discovered in Council Grove reservoir. Lake users are reminded to take precautions, before leaving the lake, to prevent their spread into other waters.

Vehicles may be driven only on maintained roads and parking areas. Off-road vehicle use is prohibited.

Camping is not permitted on the wildlife area. Excellent camping opportunities are available at the Corps of Engineers parks.

Target practice is not allowed on the area.

Digging pit blinds is prohibited. Blinds must be portable and temporary, or made of natural materials found at the blind site.

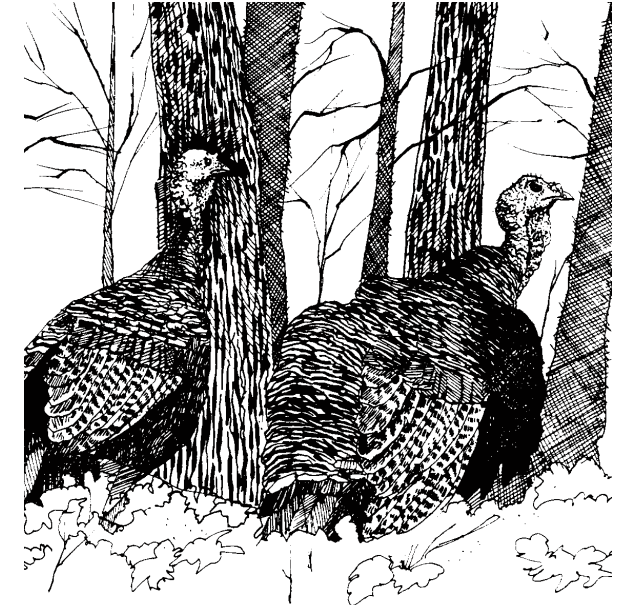


General Area Map

Equal opportunity to participate in and benefit from programs described herein is available to all individuals without regard to race, color, national origin, sex, age, disability, sexual orientation, gender identity, political affiliation, and military or veteran status. Complaints of discrimination should be sent to Office of the Secretary, Kansas Department of Wildlife, Parks and Tourism, 1020 S Kansas Ave., Topeka, KS 66612-1327. 03/13

Council Grove

Reservoir & Wildlife Area



Council Grove Wildlife Area
1130 Lake Rd.
Council Grove, KS 66846

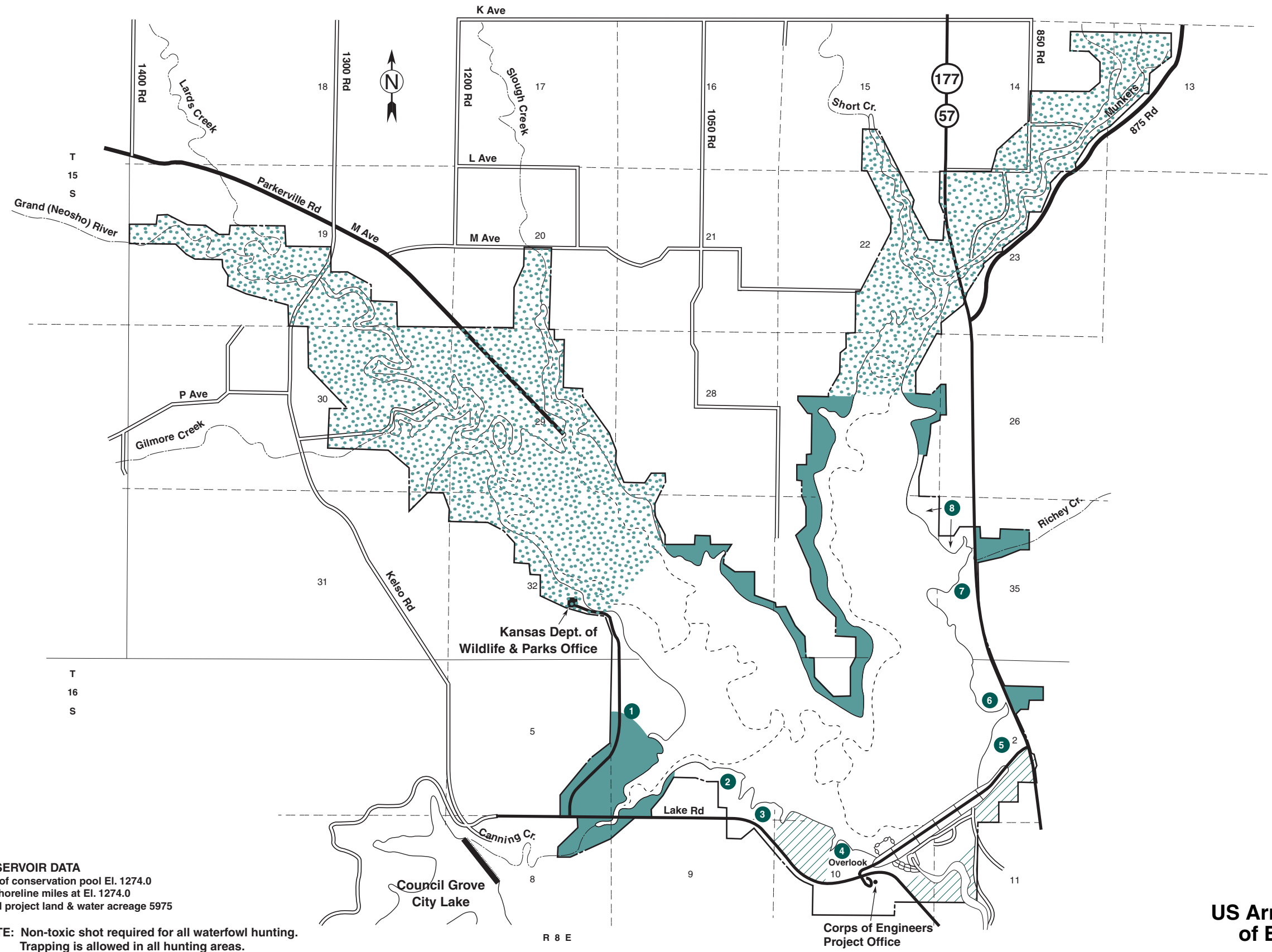

Kansas
Department of Wildlife, Parks
and Tourism

(Area Office)
(620) 767-5900
(Regional Office)
(316) 683-8069

www.ksoutdoors.com

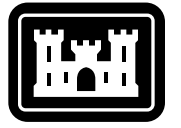
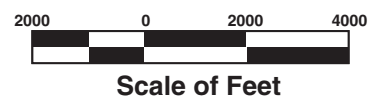
COUNCIL GROVE LAKE

PUBLIC HUNTING AREA



- PUBLIC USE AREAS**
- 1 Canning Creek Cove
 - 2 Santa Fe Trail
 - 3 Marina Cove
 - 4 Neosho Park
 - 5 Kansa View
 - 6 Kit Carson Cove
 - 7 Richey Cove
 - 8 Custer Park

- LEGEND**
- Paved Road
 - Improved Road
 - Dirt Road
 - Project Boundary
 - Corps Areas Open For Hunting
 - State Areas Open For Hunting
 - Archery, Shotgun, & Primitive Firearms Only



US Army Corps of Engineers
 Tulsa District

HUNTING GUIDE

COUNCIL GROVE LAKE

Council Grove Lake is a Corps of Engineers lake located in east central Kansas. At normal conservation pool (elevation 1,274.0 ngvd), the lake has approximately 40 miles of shoreline and 3,320 surface acres of water. Approximately 2,450 acres are open to hunting around the lake. 1,950 acres of this land is licensed to and managed by the Kansas Department of Wildlife and Parks. The remaining 500 acres are managed by the Corps of Engineers.

REGULATIONS

All lands indicated on the public hunting map are open for hunting in accordance with state and federal hunting regulations. Kansas hunting regulations may be obtained at the Kansas Department of Wildlife and Parks office located in Canning Creek Cove park on the west side of the lake or the Corps of Engineers office at the west end of the dam. Hunting areas are open for hunting for all species which may be legally taken during open season. Hunting in accordance with Kansas Department of Wildlife and Parks regulations for the species of wildlife involved is legal on all Council Grove hunting areas. Hunters should pay particular attention to special restrictions for areas identified on the map where these restrictions apply. Duck blinds will be permitted only if removed by the end of the day. Permanent hunting stands are not permitted.

Hunting is prohibited in all park areas and other areas reserved for lake operational purposes. Vehicles used on federal property may be driven only on established and maintained roads. Camping is restricted to designated campsites within developed camping areas. Fires are allowed only in designated fire rings or grills.

Hunters are reminded that if a wildlife violation is observed, it should be reported to the Kansas Department of Wildlife and Parks by calling "Operation Game Thief" at 1-877-426-3843.

PARKS

Accommodations are available on the lake for persons planning to camp on Council Grove Lake. Seven park areas have been developed and are administered for camping by the Corps of Engineers. Canning Creek Cove and Santa Fe Trail parks on the west side of the lake and Richey Cove park on the east side of the lake have full hookups and services (shower, sanitary dump station, and gated security). Four other park areas on the lake have campsites ranging from basic campsites to campsites with full hookups and fewer services. There are five group campsites located at the lake that are available for reservation. Camping fees are charged year round with full services available from April 1 to October 31. Campsites are open year round, but without water during the winter months.

HUNTING HINTS

- Handle every gun as if it were loaded.
- Be sure of your target and what is beyond it.
- Be courteous.
- Obey all wildlife laws.
- Know the weapon restriction in the area you are hunting.
- No loaded weapons in the parks and campgrounds.

CONTACT INFORMATION

For information on land uses, current lake level, and regulation governing use of Council Grove Lake as outlined in Title 36 of the Code of Federal Regulations, contact any of the park rangers at:

U.S. Army Corps of Engineers
Council Grove Lake
945 Lake Road
Council Grove, Kansas 66846
Phone: (620) 767-5195

Hunting maps are also available on the Tulsa District's Webpage at www.swt.usace.army.mil