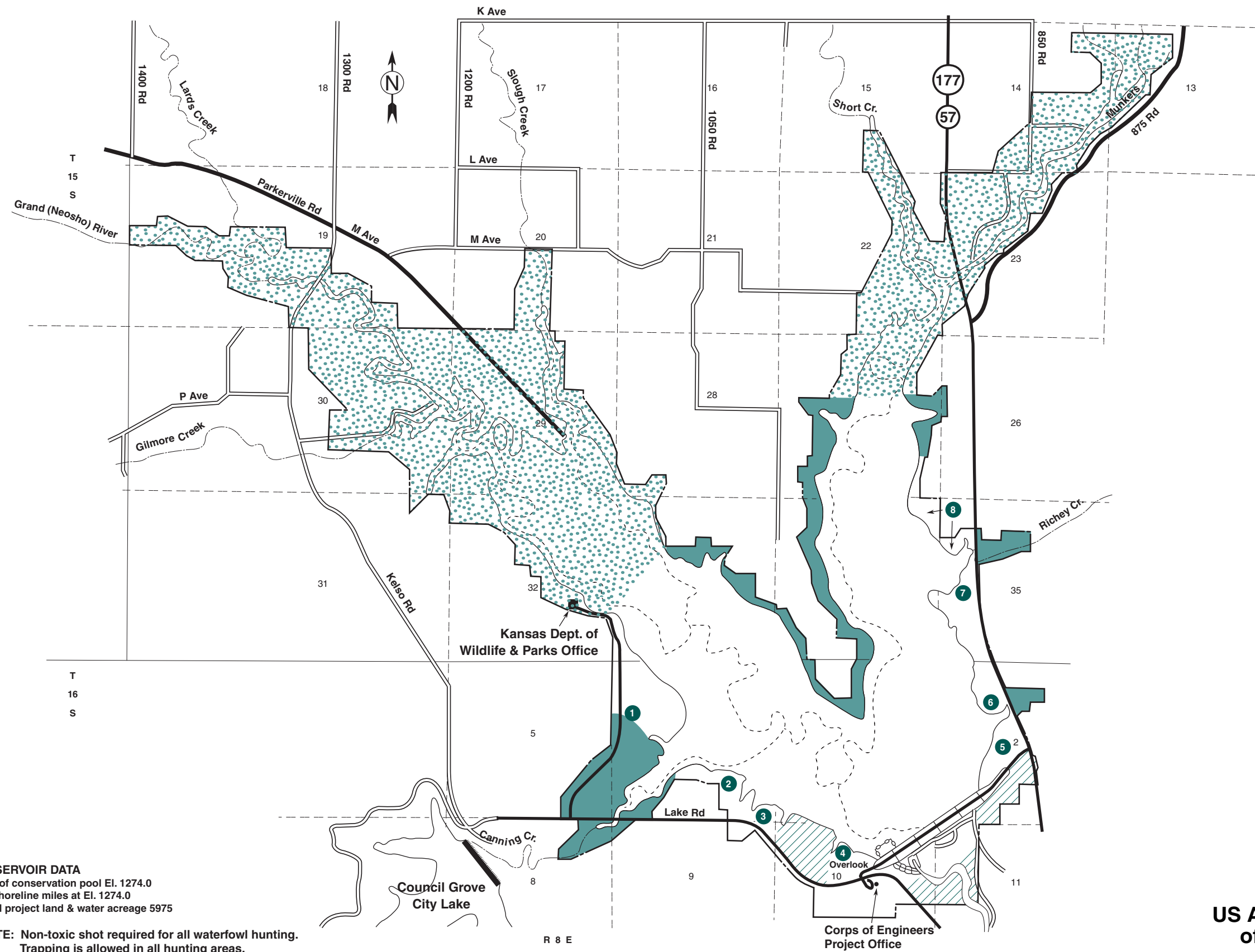


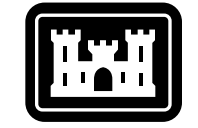
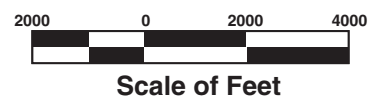
# COUNCIL GROVE LAKE

PUBLIC HUNTING AREA



- PUBLIC USE AREAS**
- 1 Canning Creek Cove
  - 2 Santa Fe Trail
  - 3 Marina Cove
  - 4 Neosho Park
  - 5 Kansa View
  - 6 Kit Carson Cove
  - 7 Richey Cove
  - 8 Custer Park

- LEGEND**
- Paved Road
  - Improved Road
  - Dirt Road
  - Project Boundary
  - Corps Areas Open For Hunting
  - State Areas Open For Hunting
  - Archery, Shotgun, & Primitive Firearms Only



**US Army Corps of Engineers**  
 Tulsa District

## **HUNTING GUIDE**

### **COUNCIL GROVE LAKE**

Council Grove Lake is a Corps of Engineers lake located in east central Kansas. At normal conservation pool (elevation 1,274.0 ngvd), the lake has approximately 40 miles of shoreline and 3,320 surface acres of water. Approximately 2,450 acres are open to hunting around the lake. 1,950 acres of this land is licensed to and managed by the Kansas Department of Wildlife and Parks. The remaining 500 acres are managed by the Corps of Engineers.

### **REGULATIONS**

All lands indicated on the public hunting map are open for hunting in accordance with state and federal hunting regulations. Kansas hunting regulations may be obtained at the Kansas Department of Wildlife and Parks office located in Canning Creek Cove park on the west side of the lake or the Corps of Engineers office at the west end of the dam. Hunting areas are open for hunting for all species which may be legally taken during open season. Hunting in accordance with Kansas Department of Wildlife and Parks regulations for the species of wildlife involved is legal on all Council Grove hunting areas. Hunters should pay particular attention to special restrictions for areas identified on the map where these restrictions apply. Duck blinds will be permitted only if removed by the end of the day. Permanent hunting stands are not permitted.

Hunting is prohibited in all park areas and other areas reserved for lake operational purposes. Vehicles used on federal property may be driven only on established and maintained roads. Camping is restricted to designated campsites within developed camping areas. Fires are allowed only in designated fire rings or grills.

Hunters are reminded that if a wildlife violation is observed, it should be reported to the Kansas Department of Wildlife and Parks by calling "Operation Game Thief" at 1-877-426-3843.

## **PARKS**

Accommodations are available on the lake for persons planning to camp on Council Grove Lake. Seven park areas have been developed and are administered for camping by the Corps of Engineers. Canning Creek Cove and Santa Fe Trail parks on the west side of the lake and Richey Cove park on the east side of the lake have full hookups and services (shower, sanitary dump station, and gated security). Four other park areas on the lake have campsites ranging from basic campsites to campsites with full hookups and fewer services. There are five group campsites located at the lake that are available for reservation. Camping fees are charged year round with full services available from April 1 to October 31. Campsites are open year round, but without water during the winter months.

### **HUNTING HINTS**

- Handle every gun as if it were loaded.
- Be sure of your target and what is beyond it.
- Be courteous.
- Obey all wildlife laws.
- Know the weapon restriction in the area you are hunting.
- No loaded weapons in the parks and campgrounds.

### **CONTACT INFORMATION**

For information on land uses, current lake level, and regulation governing use of Council Grove Lake as outlined in Title 36 of the Code of Federal Regulations, contact any of the park rangers at:

U.S. Army Corps of Engineers  
Council Grove Lake  
945 Lake Road  
Council Grove, Kansas 66846  
Phone: (620) 767-5195

Hunting maps are also available on the Tulsa District's Webpage at [www.swt.usace.army.mil](http://www.swt.usace.army.mil)